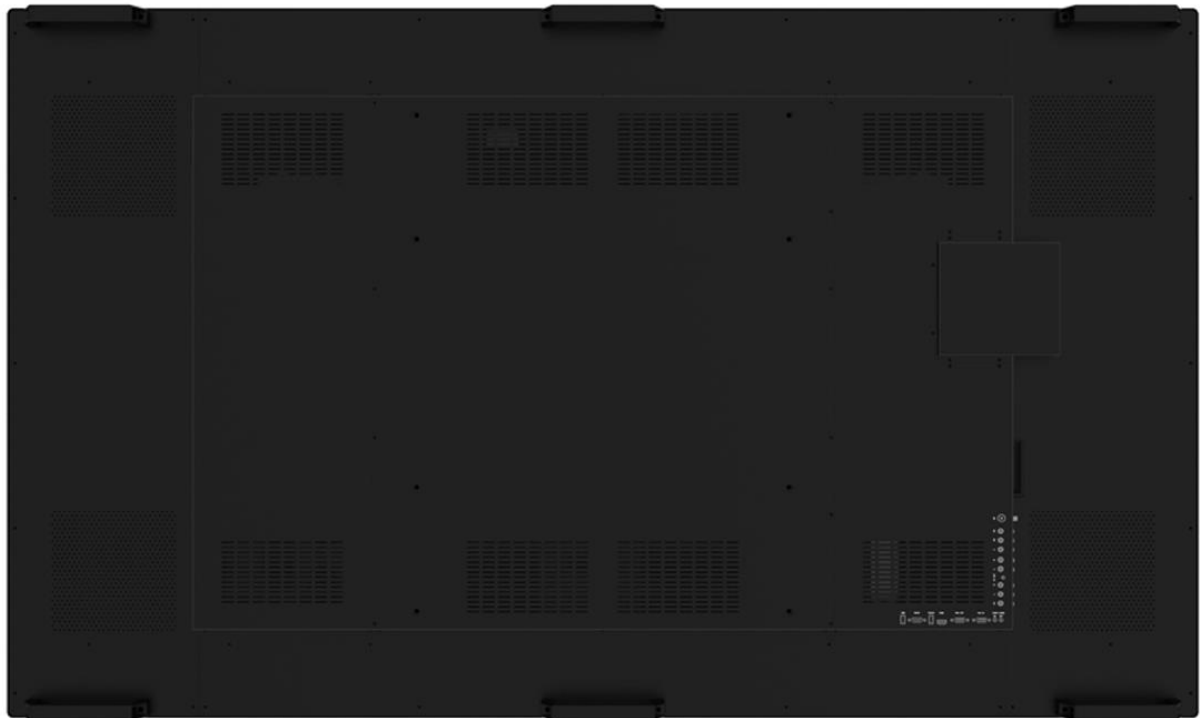


# Interactive Touch Display User Manual

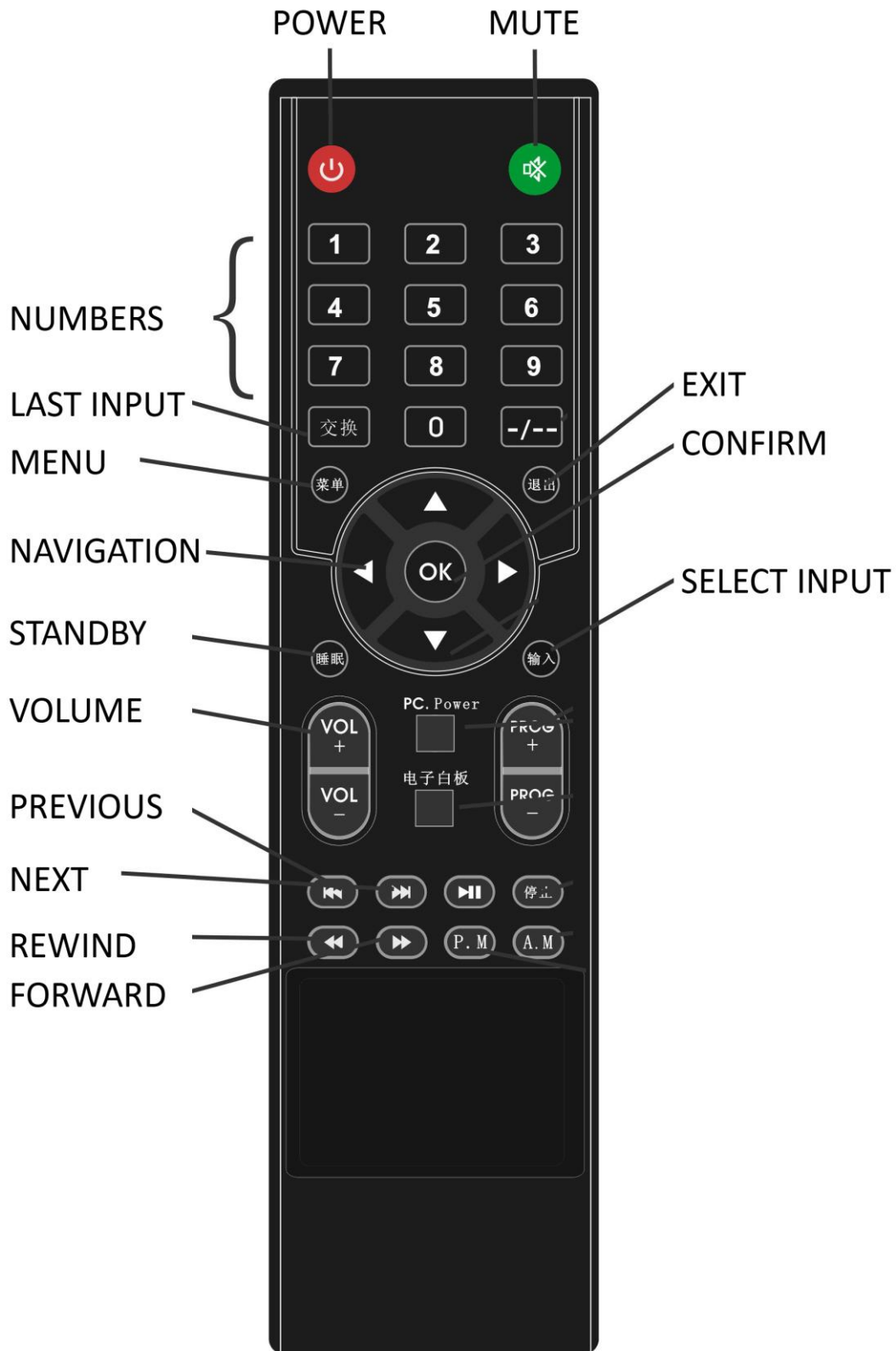
## Front



## Back



Remote Control



## Remote Control Range

Please keep remote control within 8 meters of sensor.



Front Controls



Button	Function
^	Navigate Down
v	Navigate Up
<	Decrease Volume
>	Increase Volume
<b>Input</b>	Select Input Source
<b>Menu</b>	Menu Access
<b>POWER</b>	Power ON/OFF
<b>IR</b>	Remote Control Sensor

## Front Inputs



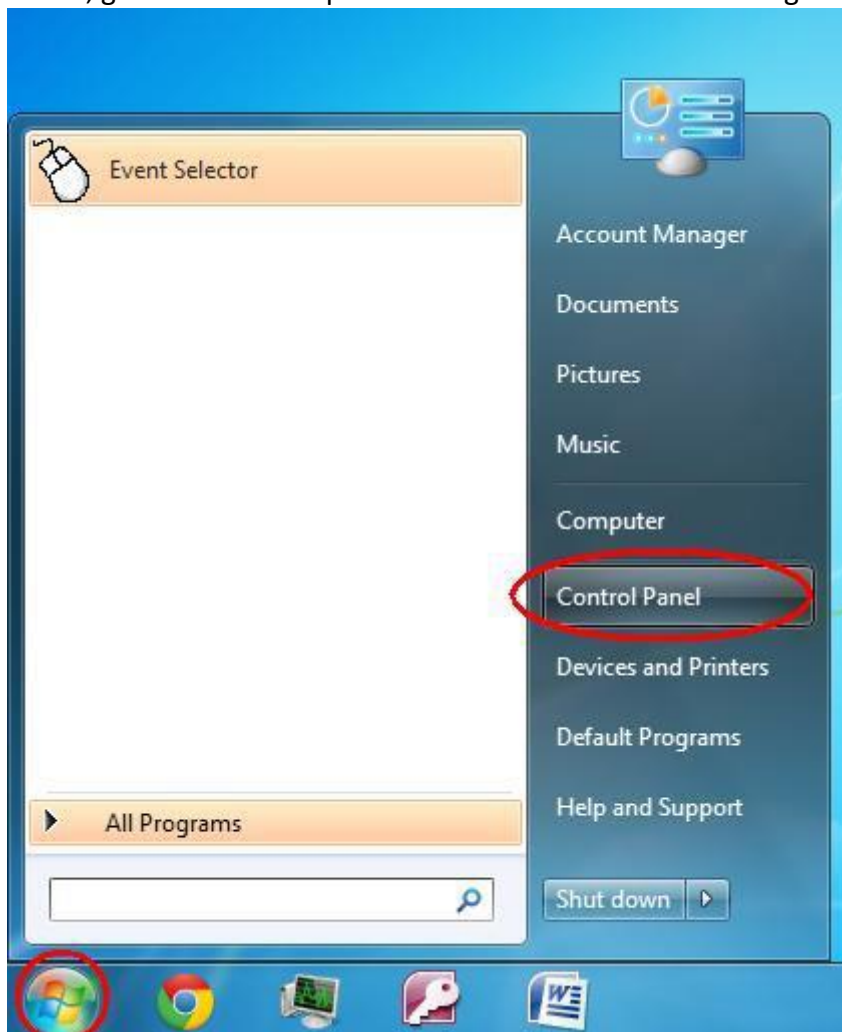
Input	Function
HDMI	HDMI input for AV signal
TOUCH	USB port for touch function
USB	USB port for internal PC (where applicable)
USB	USB port for internal PC (where applicable)
USB	USB port for internal PC (where applicable)

## Calibration for Windows 7

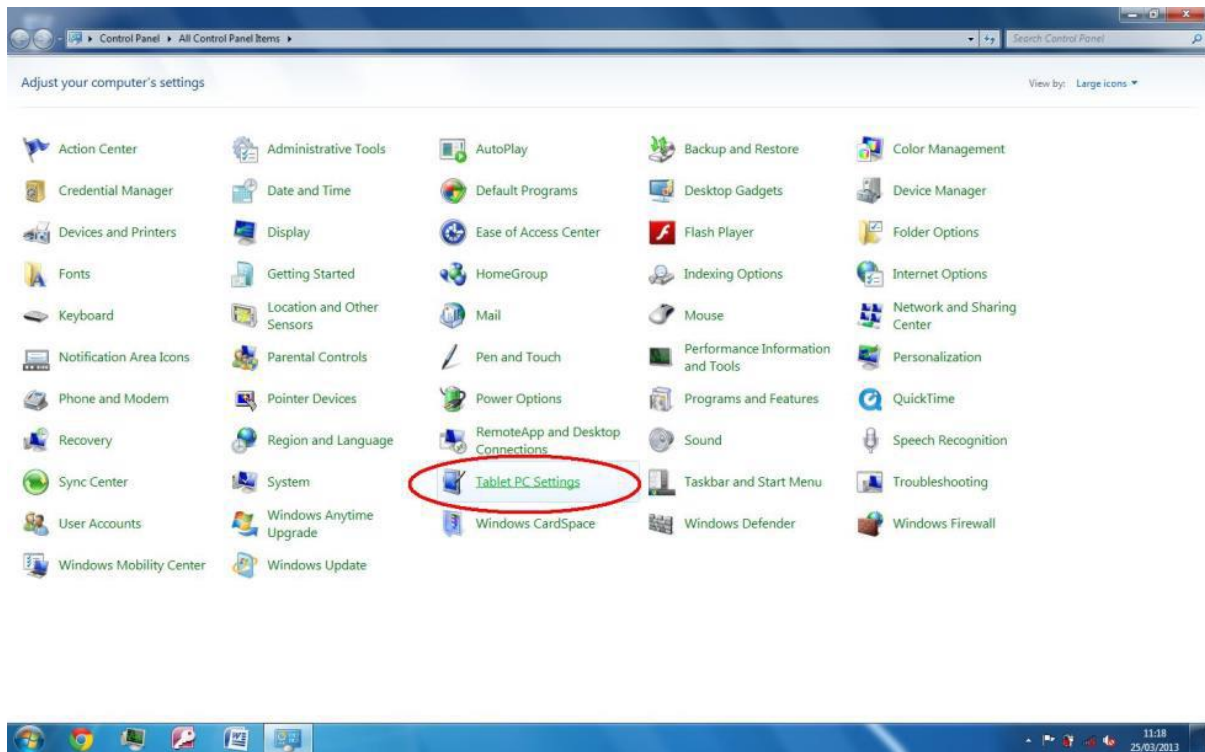
Your Windows PC should automatically recognise your product as a touch screen and install the necessary drivers and calibrate. Once you connect the touch screen to your PC via the USB cable it should be ready to use.

If you want to calibrate the touch screen manually, please follow the instructions below.

1. Make sure you have correctly connected the touch screen to your PC, it is displaying in the correct resolution, and the cursor responds when you touch the screen. Then click 'Start', go to the control panel and find the 'Tablet PC Setting'.

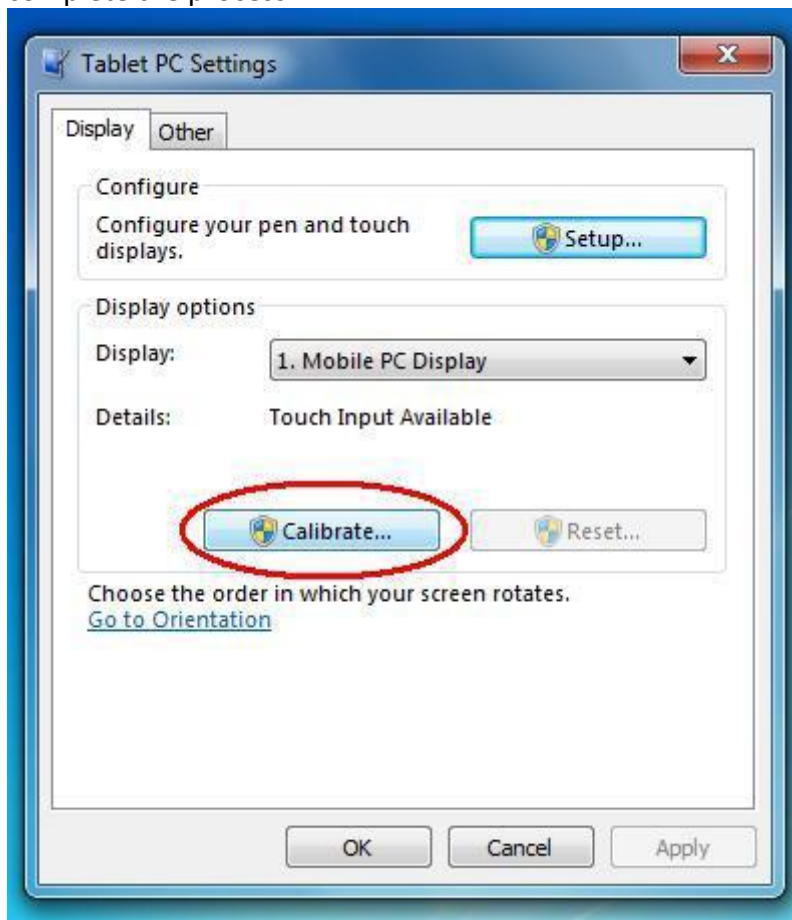


# Interactive Touch Display User Manual





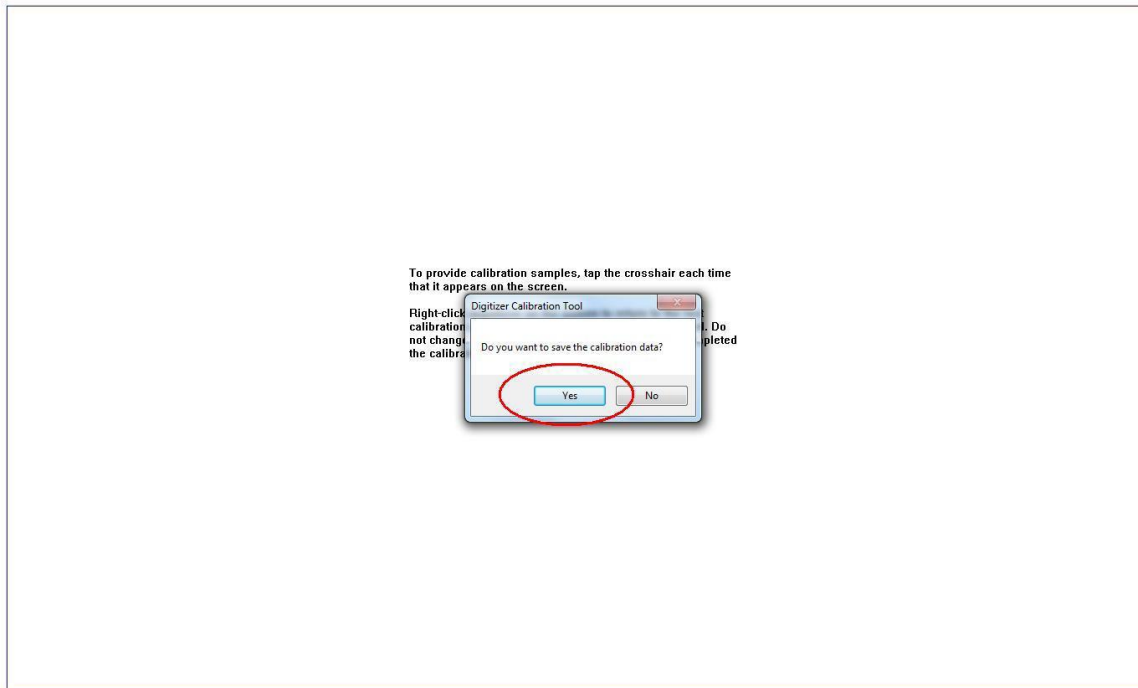
2. In the pop-up window, find and click the 'Calibrate' button then follow the instruction to complete the process.



To provide calibration samples, tap the crosshair each time that it appears on the screen.

Right-click anywhere on the screen to return to the last calibration point. Press the Esc button to close the tool. Do not change your screen orientation until you have completed the calibration process.

3. Click 'Yes' at the end of the progress to finish the calibration.



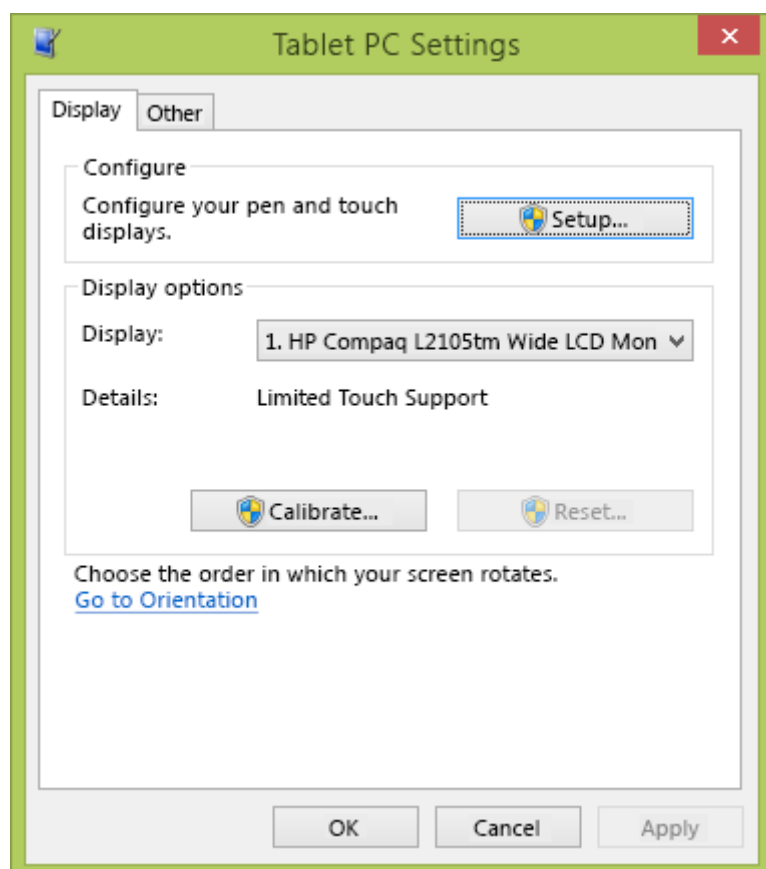
**NOTE:** If your PC recognizes the touch screen as a "Touch Pad" please remove USB cable and re-insert it.

### Calibration for Windows 8.1

Your Windows PC should automatically recognise your product as a touch screen and install the necessary drivers and calibrate. Once you connect the touch screen to your PC via the USB cable it should be ready to use.

If you want to calibrate the touch screen manually, please follow the instructions below.

1. Swipe in from the right edge of the screen, then tap Search. (If you're using a mouse, point to the bottom-right corner of the screen, move the mouse pointer up, then click Search.)
2. Enter Calibrate in the search box, then tap or click Calibrate screen for pen or touch input to open Tablet PC Settings.
3. Check that the monitor shown in the Display field matches the screen that you want to calibrate.
4. Tap or click Calibrate, then follow the on-screen instructions.



**NOTE:** If your PC recognizes the touch screen as a “Touch Pad” please remove USB cable and re-insert it.